

Reverse Osmosis

Source Water Purification & Wastewater Recovery



Purify and Recover up to 87.5% of Your Wastewater

Designed for ultra-efficiency, **Kontek's ROKON** systems recover up to 87.5% of process water or purify source water. Our highly efficient membranes and optional variable speed drives will minimize your facility's energy requirements.

ROKON Systems are controlled by PLC-driver operation interfaces,

which display and archive all important system information on a user friendly control panel. Premium instrumentation package offers industry-leading membrane protection.

Every **ROKON** system is mounted on a powder-coated or stainless steel rugged frame designed to withstand harsh environmental

conditions. **Kontek** only utilized the highest quality pumps, membranes and instrumentation with proven performance and durability.

ROKON can be configured as single pass, double pass, single pass with brine recovery or double stacked. The system is engineered and manufactured to your specific manufacturing process needs.



Kontek Process Water Management
16704 150th Avenue, Suite A
Spring Lake, Michigan, USA 49459

Kontek Process Water Management
3250 Harvester Road, Unit 1
Burlington, Ontario, Canada L7N 3W9

kontekwater.com
Ph: 877.332.8366
sales@kontekecology.com

SYSTEM DESIGN

ROKON PRE-TREATMENT

Pretreatment requirements are based upon the quality of source water. Typical pre-treatment steps include multi-media filtration, chlorine & organics removal and chemical and/or brine softening.

ROKON's exceptionally low-fouling membranes and high quality pre-treatment systems reduce cleaning and maintenance costs while extending your system's life.

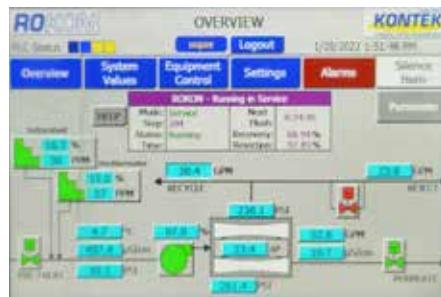
DEPENDABLE

Simply let your **ROKON** system run!

Our PLC interface will automatically alert you as soon as it needs operator attention - always protecting your system while keeping it running smoothly.

ROKON Systems Remove:

- Metals and Salts
- Organics
- Colloidal and Non-Colloidal Particles
- Bacteria



ROKON HMI

CLEAN IN PLACE (CIP) SYSTEMS

Available with or without heat **ROKON** systems include valved CIP connections.

LOW-FOULING MEMBRANES

ROKON uses membranes lined with patented polyamide-urea barrier. The chemical composition of these membranes naturally reduces fouling rates, enhancing the reverse osmosis process.

Technical Specifications

- Standard designed flow rates from 5 to 300 GPM / skid
- 316 or 304 SS pump with a high efficiency TEFC motor
- All high-pressure piping is heavy wall 316 SS
- Adjustable reject recirculation
- Up to 87.5% water recovery
- Stainless steel filter housing with 1.0 micron filter cartridges
- ASME rated and stamped pressure vessels
- Long membrane life span, reducing system downtime and maintenance costs
- PLC-controlled with colour touch screen HMI controls for real-time data collection and maximum flexibility
- Digital or analog high quality flow, conductivity and pressure sensors displays % recovery, % rejection and trans-membrane pressure
- Meets UL, ULC and CE standards
- Skidded construction; powder coated steel or stainless-steel frame equipped with foot pads
- Wet factory acceptance testing assures quality and performance

ROKON complete system



ROKON System

Complete with carbon and greensand filtration, pre-treatment and an automated heated CIP.

