

"...Because it Works!"

# KONTEK

PROCESS WATER MANAGEMENT

# BTS SYSTEM

## Automatic Batch Treatment Systems <



**Cost Effective**  
**Customized**  
**Consistent**  
**Automated**  
**Reliable**  
**Flexible**

## 500 to 10,000 US Gallon Capacity

**KONTEK's BTS** (Batch Treatment System) incorporates the highest level of technological automation and superior quality components. Our **BTS** Systems are precision engineered to meet the most stringent treatment and discharge requirements. **KONTEK BTS** Systems can be applied in numerous industries including: metal finishing, printing, paperboard, oils, coolants, and chemical processing.

All **BTS** Systems are specifically designed to increase efficiency and reduce the need for constant operator attention. The automatic PLC-controlled unit enables the operator to easily adjust programmable treatment recipes. Solids are then processed through a **KONTEK CONREC Filter Press** or an automatically indexing flat-bed filter. This separate sludge processing ensures availability, uptime and productivity.

The unique modular design uses highly accurate, pulse proportional, reagent feed systems and redundant pH/ORP controls. All treated water is pH monitored and polished prior to discharge. The final effluent is then analyzed to confirm compliance. A **KONTEK BTS** System will achieve your critical wastewater treatment goals using the most advanced technology on the market.

**An ISO 9001 Company**  
**Established 1980**

Kontek Ecology Systems Inc.  
3250 Harvester Road, Unit 1  
Burlington, Ontario, Canada L7N 3W9

**Ph: 877.332.8366**  
**Fax: 905.332.8367**  
sales@kontekecology.com

**[www.kontekwater.com](http://www.kontekwater.com)**

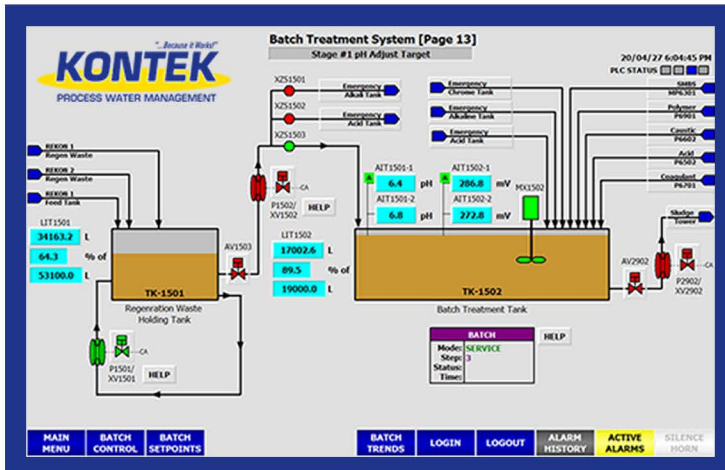
**Industrial Wastewater Recovery & Treatment • Source Water Purification**



# Automatic Batch Treatment System

**KONTEK BTS** Systems are equipped with our **SMART LOGIC** PLC control system for superior data tracking and on-screen troubleshooting capabilities. All **BTS** Systems come complete with redundant pH/ORP probes, HMI adjustable setpoints and optional remote access capabilities.

Equipped to treat the most difficult types of wastewater and concentrated waste solutions in batches, the **BTS** System ensures that your water quality expectations and strict environmental discharge limits are continuously met.



## Features and Benefits

- Skid mounted modular design for the most cost-effective installation and operation
- PLC/HMI interface with recipe driven programmable controls
- Double diaphragm pulse proportional controls for all automatic reagent additions
- Ultrasonic level controls for automatic solution transfer and high-level prevention
- Polyethylene, stainless steel, or fiberglass batch reactors depending on each specific application
- Control systems are mounted in Nema-rated enclosures and certified with uL/CSA
- Heavy duty, long life, variable speed electric or air mixers for each application

## Optional Equipment

### Effluent Discharge Pumps

Final effluent discharge pump stations are supplied with pumps, filtration media effluent collection tank, and level control systems.

**Duplex Batch Treatment Systems** In situations where one batch treatment system does not meet wastewater processing requirements, **KONTEK** can supply duplex batch treatment systems. Units are skid mounted (to 1000 USG) and are effectively designed to minimize capital requirements.

### Sludge Thickening Tanks

**KONTEK BTS** Systems are used in conjunction with a sludge tower for additional sludge thickening before dewatering through a **KONTEK CONREC Filter Press** allowing the **BTS** system to be available for treatment while solids dewatering takes place.

A **KONTEK BTS** System can also be used to treat the regeneration waste from a **KONTEK REKON** wastewater recovery system.

## Industries

- Metal finishing wastewater and spent concentrated process solution
- Flexographic/Lithographic and paperboard printing ink wastewater
- Petrochemical wastewater treatment/recovery
- Spent coolant, die lube, and cutting fluid solution treatment
- Aerospace
- Ground water remediation
- BOD reduction
- Textile dyeing/tanning wastewater treatment
- Mining
- Food and beverage

